

Ontrack® EasyRecovery

Data Recovery and Repair Software

EasyRecovery® products help you recover, repair and restore your valuable data. The loss or corruption of critical data can have staggering financial, legal and productivity ramifications on businesses and home users alike. Important documents are often difficult or even impossible to recreate.

With EasyRecovery do-it-yourself software you can get your data back quickly and easily ... saving you time, money, and resources.

Causes of data loss or corruption are:

- Accidental file deletion
- Computer viruses or worms
- Damage due to a power failure or surge
- Software program failures
- Partitioning or boot-up problems
- Corrupt or missing critical file system structures
- Drives that have been fdisked or formatted
- Application crash
- System shutdown
- Hard disk or media failure

Whether you are a business executive, an IT Professional or a home user, there are many ways for important data to be lost or corrupted. Now there is one simple way to restore it with the EasyRecovery family of products. EasyRecovery software recovers and repairs lost or inaccessible data quickly and easily.

Only Ontrack offers award winning, do-it-yourself software solutions to recover and repair your valuable data. EasyRecovery is based on Ontrack's 20 years of data recovery experience. Trust your data to Ontrack, market pioneer and world leader in Data Recovery software and service solutions.

Who needs EasyRecovery software?

- Computer IT professionals
- Computer service or repair technicians
- Small office or home office computer users

Computer enthusiasts

Anyone suffering from data loss or corruption

Not all types of data loss or corruption require the assistance of an engineer. As long as your system's hardware is fully functional, the EasyRecovery family of products may be the only solution you need for all of your data repair, recovery, and disk diagnostic needs.

EasyRecovery Product Options

EasyRecovery DataRecovery



EasyRecovery DataRecovery is a simple, yet powerful tool for recovering lost data caused by accidental file

deletion, virus infection, and inaccessible or unbootable partitions. Use the Emergency Boot Media to recover data from systems that cannot boot to Windows.

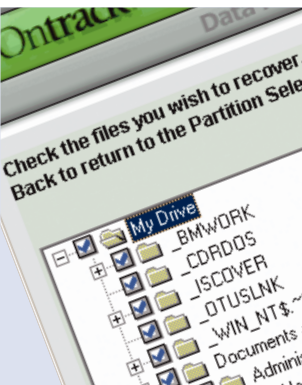
EasyRecovery DataRecovery also comes in a feature limited EasyRecovery Lite® edition that allows you to recover 25 files per recovery session. Both editions include repair capabilities for Zip files.

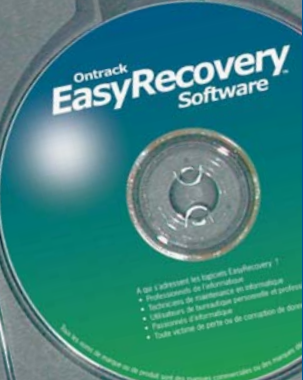
EasyRecovery EmailRepair

EasyRecovery EmailRepair repairs and restores Microsoft® Outlook and Outlook Express files that are accessible but cannot be opened. It also includes repair and restore capabilities for corrupted Zip files.

EasyRecovery FileRepair

EasyRecovery FileRepair repairs and restores corrupt files into new readable files. It's a complete repair and restore solution for corrupted Microsoft® Access, Excel, PowerPoint and Word files, plus corrupted Zip files.





Ontrack® EasyRecovery

Data Recovery and Repair Software



EasyRecovery Professional

EasyRecovery Professional contains the most advanced data recovery, file repair and disk diagnostic capabilities available.



EasyRecovery Professional includes all of the EasyRecovery DataRecovery, EasyRecovery EmailRepair and EasyRecovery FileRepair features and benefits, plus superior disk diagnostics including Ontrack Data Advisor®, and advanced data recovery capabilities and options.

EasyRecovery Trial Editions

The EasyRecovery Trial Editions identify and allow you to view the deleted and corrupted files that can be recovered and restored with a full edition of EasyRecovery. As an added benefit, the Zip repair component is fully functional and allows you to recover and repair deleted or corrupt Zip files!

EasyRecovery Professional Special Licensing

Options

The EasyRecovery Professional Commercial Licence is licensed per workstation for commercial and consulting use to recover, repair, and restore data.

The EasyRecovery Professional Enterprise Licence is licensed for business and corporate use to internally perform recoveries on a designated number of storage devices.

Added Value

If you need additional data recovery solutions, a built in Crisis Center™ is included in EasyRecovery software to provide you with emergency escalation assistance.

These data recovery options include:

Remote Service

Remote Data Recovery™ technology enables Ontrack engineers to recover lost data remotely via a secure modem or Internet connection, making it the fastest data recovery method available in the world today.

In-Lab Service

For hard drives that are physically damaged, malfunctioning, or have been exposed to a disaster, this data recovery service is the most effective data loss solution.

System Requirements

Windows 98SE, Me, 2000 and XP

Note: Although EasyRecovery requires the above operating systems for installation purposes, EasyRecovery is capable of recovering files from DOS and other Windows-based operating systems such as 3.x, 95, 98, and NT

Minimum of 64MB of RAM (in most cases)
Pentium-class processor

Microsoft Internet Explorer 4.0 or later
Software program applicable to the type of files to be repaired or recovered

Recovery capabilities for:

IDE/EIDE/ATA, Serial ATA and SCSI hard disks, floppy diskettes, Zip and Jaz removable media, external media devices, and digital media (ie. Flash memory)

File Repair capabilities for:

Files created using modern versions of Microsoft Office, Zip, Microsoft Outlook, and Microsoft Outlook Express. For more information, visit the website.

Installation requirements:

150MB (maximum) of free space on your hard drive for the installation process

All products and brand names mentioned are trademarks or registered trademarks of their respective holders.

© 2005 Kroll Ontrack Inc.